

# Bald Eagle

*Haliaeetus leucocephalus*

The bald eagle is the national bird of the United States of America.

This bird is a sacred creature to Native North Americans, and was chosen as the national emblem of the United States of America and the seals of many federal agencies including the FBI.

The breeding range is expanding in Alaska, Northwestern Canada, and the Eastern United States of America and along the north pacific coast of North America.

They have a wingspan up to 2 meters and the body color is dark brown. When they become fully mature, they attain white head and neck feathers.

They feed primarily on fish, supplemented by waterfowl, small mammals, reptile, carrion, etc.



Cut out each part carefully with scissors or a cutter.

Pay attention to red arrows.

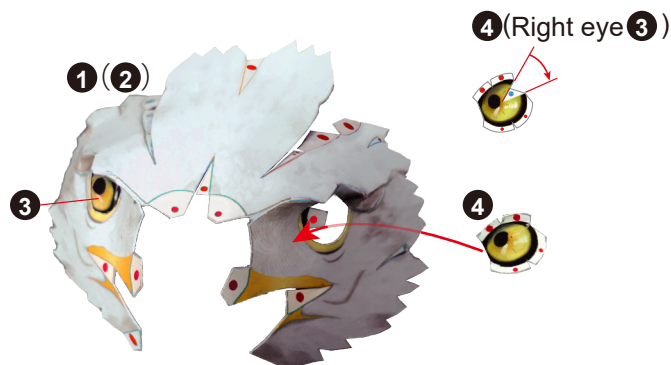
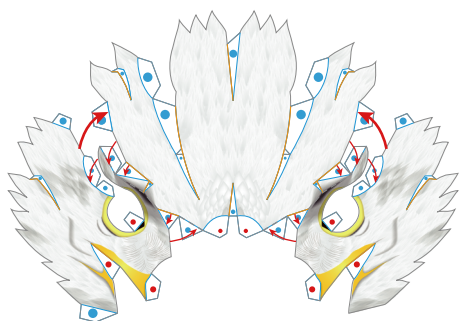
The red lines show not only the outline of each part but also lines to be cut along.

Wood glue is useful for gluing each part.

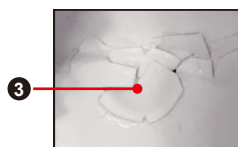
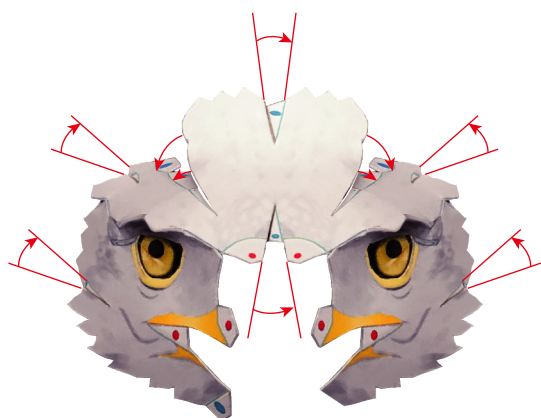
- Cut
- Cut in
- - - - Mountain fold
- - - - Valley fold
- Glue tab line
- Glue spot
- Glue spot
- Glue spot for gluing parts such as feathers together.
- Cut out

## 1 Assembly of the head and eyes

1 (With the mouth opened) 2



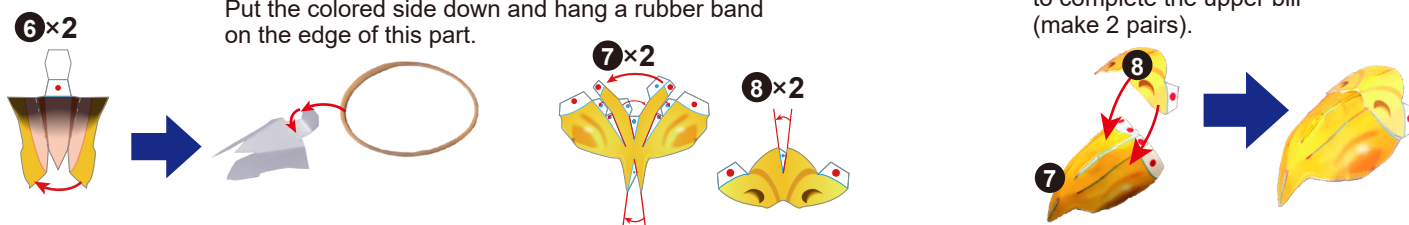
Tuck and glue the glue tabs of both eyes 3(4) under the back of the face part 1(2) to glue both eyes.



The back of 1

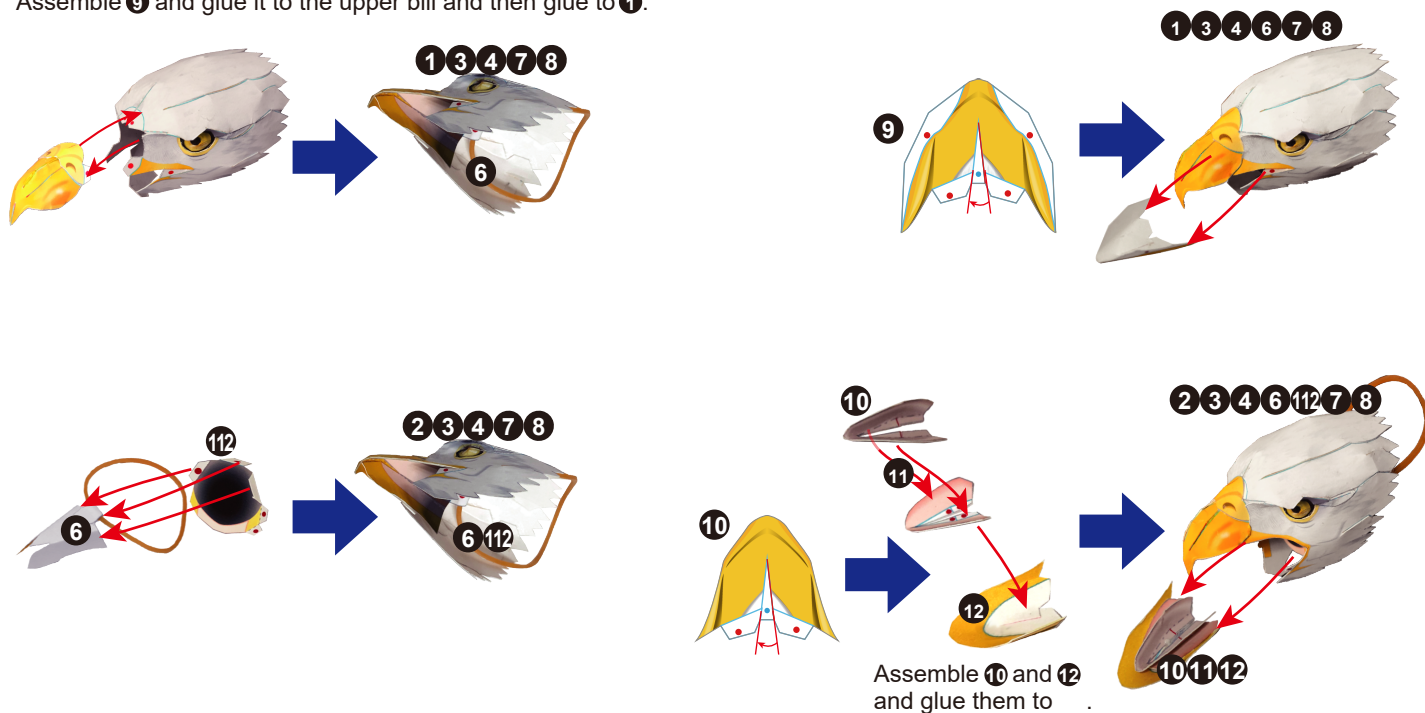
## 2 Assembly of the upper bill

Assemble the parts **6**, **7** and **8** as shown below.

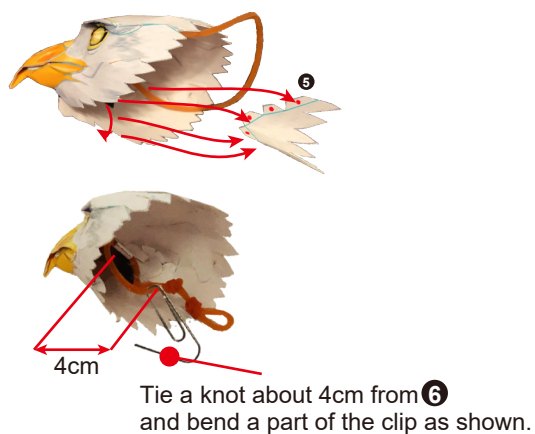


## 3 Completion of the head part

Assemble **9** and glue it to the upper bill and then glue to **1**.



Glue the lower glue tabs of **1** and **2** and then attach **5** to complete the head part.



### Completion of the head part

With the mouth closed

With the mouth opened

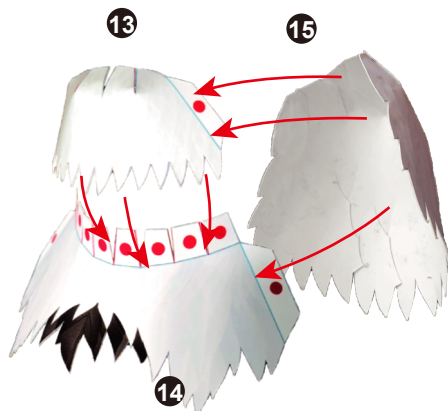
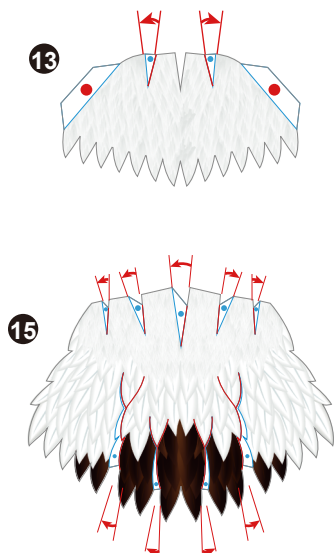




**4** Assembly of the neck

Assemble 13 and 14.

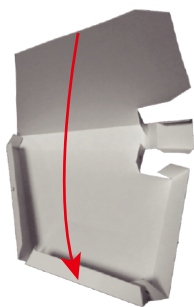
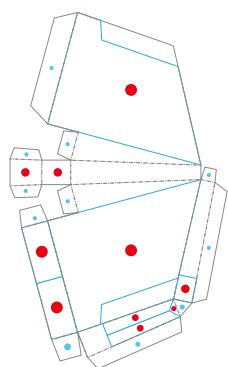
Attach 13, 14 and 15 to each other.



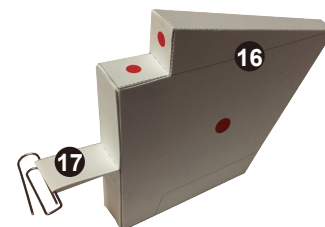
Completion of the neck

**5** Assembly of the internal frame of the body: Part 1

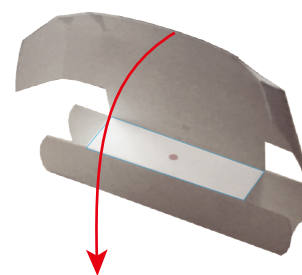
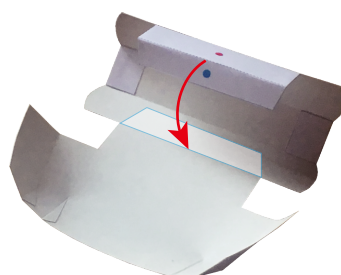
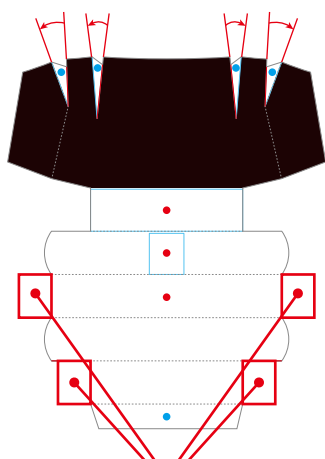
Assemble 16.



Attach a clip to 17 and glue 17 to 16 as shown.



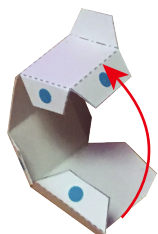
Assemble 22.



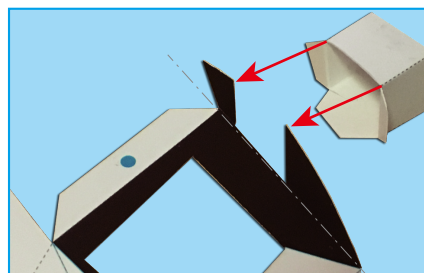
Fold 22 inward along the red line and glue.

**6** Assembly of the internal frame of the body: Part 2

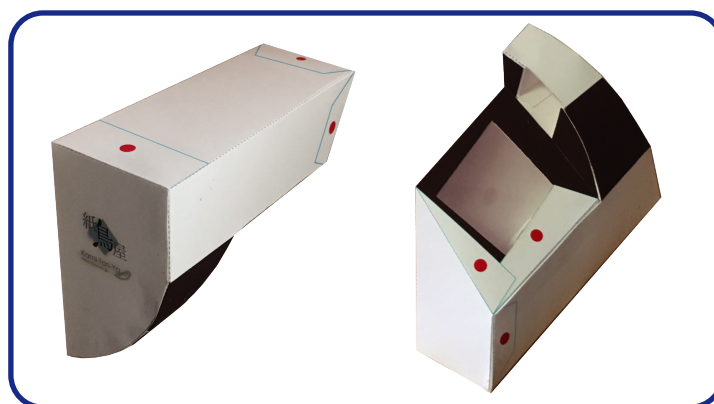
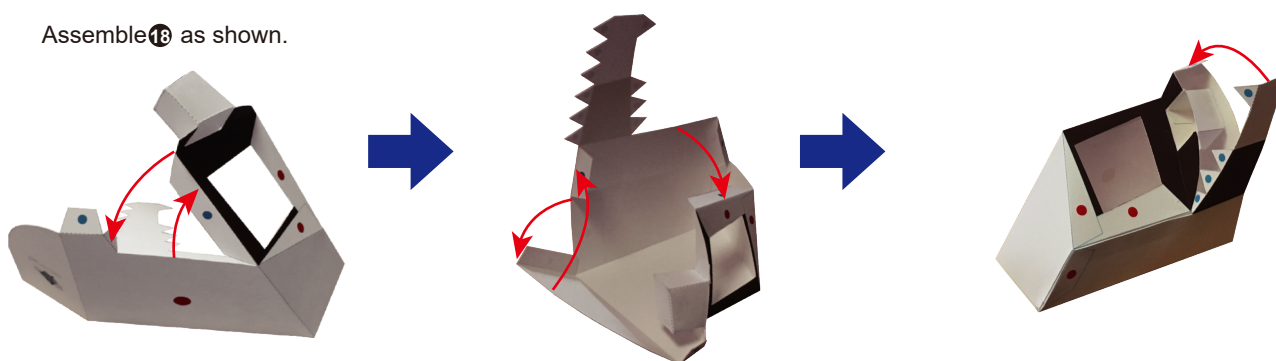
Assemble **19**.



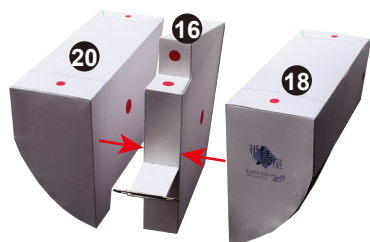
Glue **19** to **18**.



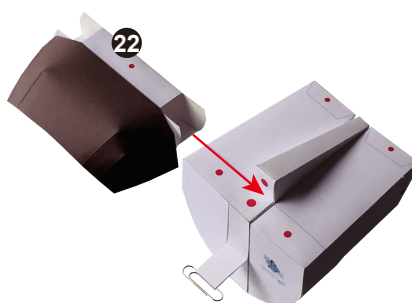
Assemble **18** as shown.



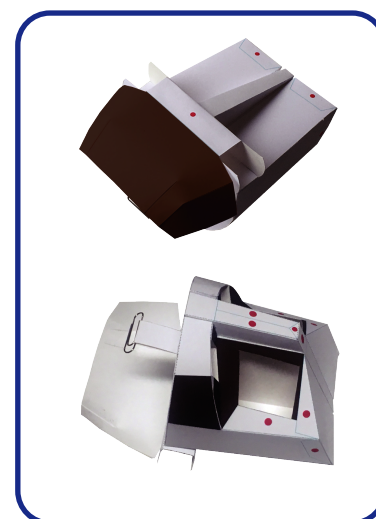
Glue **16**, **18** and **20** to together.



In addition, glue **22** to them.



Completion of internal frame of the body

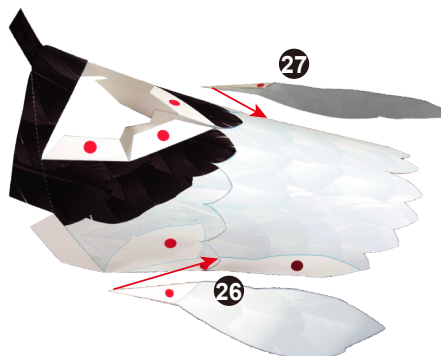


**7** Assembly of the lower tail coverts

Glue **23**, **24** and **25** together.

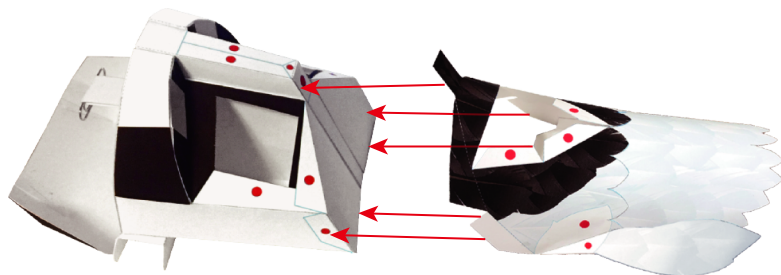


In addition, glue **26** and **27** to them.



**8** Assembly of the body

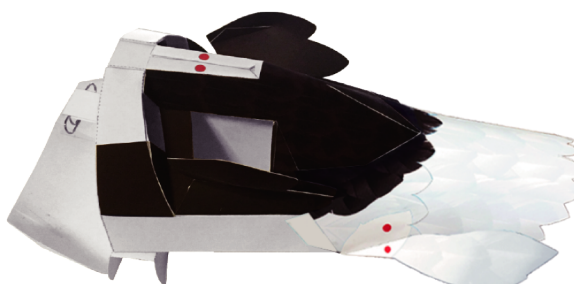
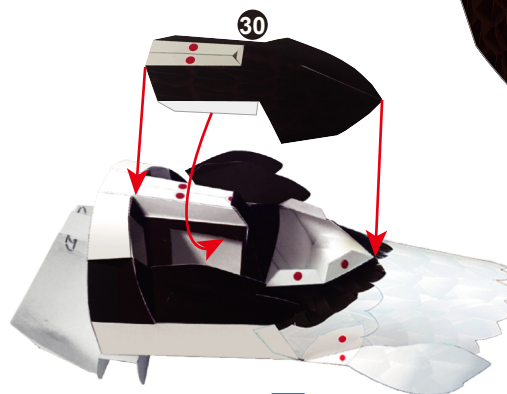
Glue the internal body and the lower tail coverts.



Assemble **28** and **29** and then glue them to the body.



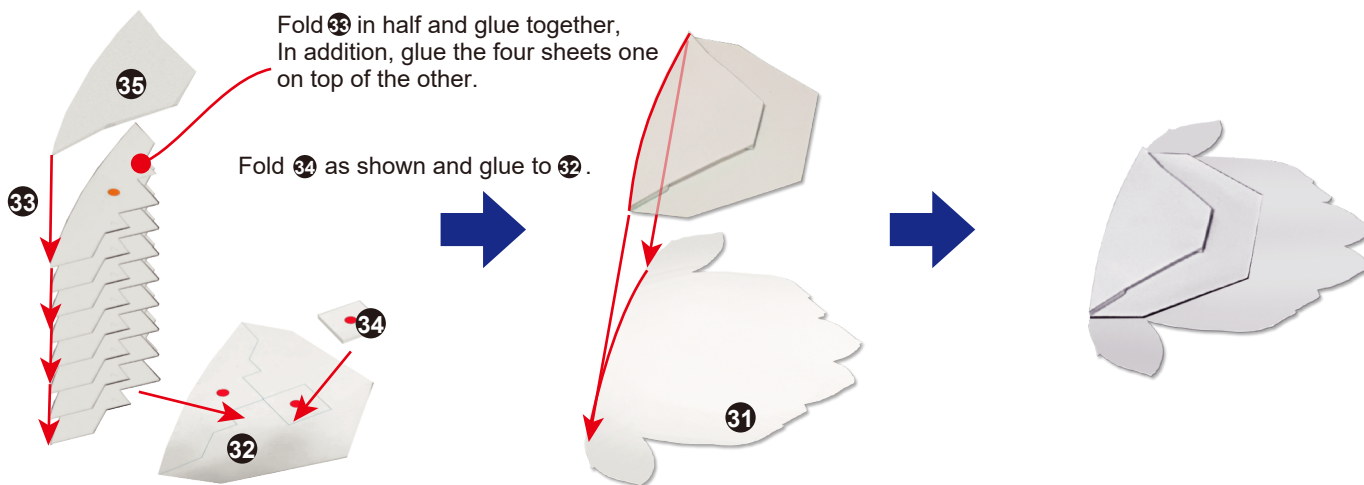
Assemble **30** and then glue it to the body.





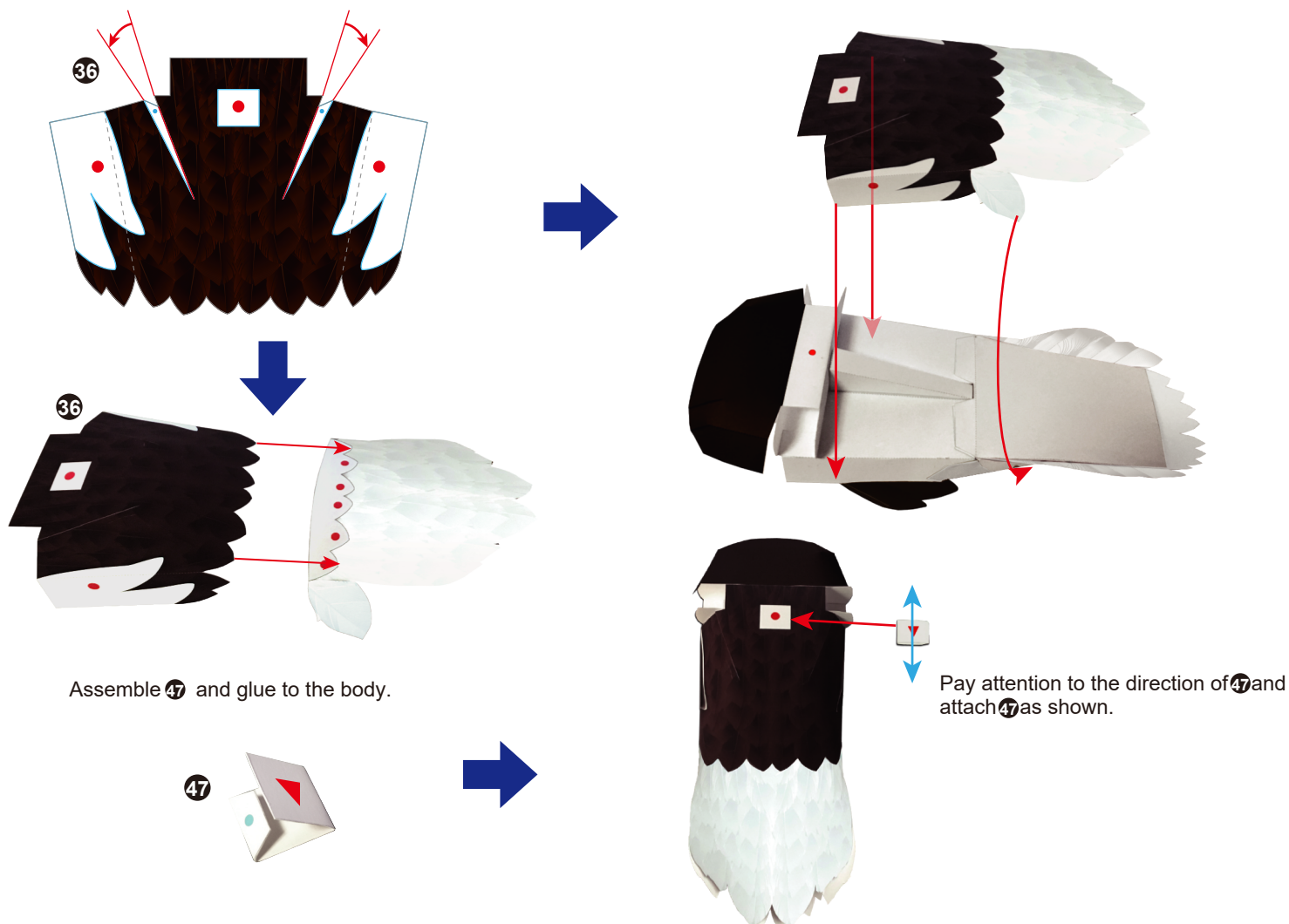
**9** Assembly of the upper tail covers

Glue **32**, **33**, **34** and **35** together and then glue them to the back of **31**.



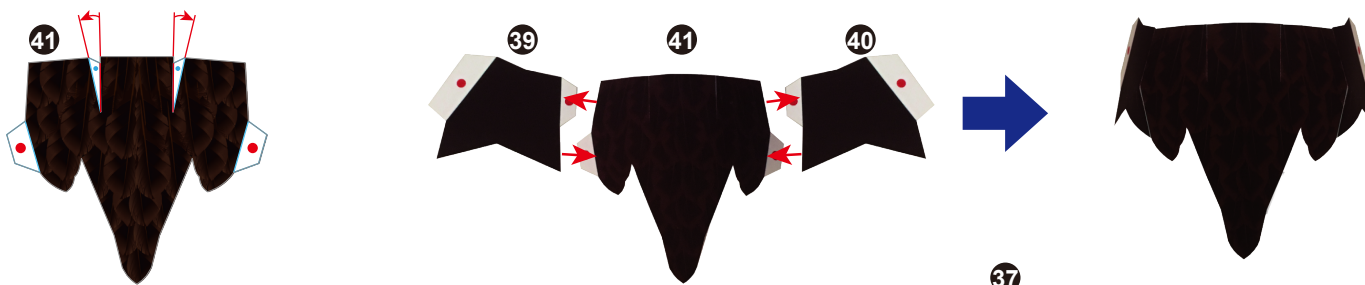
**10** Assembly of the back part

Assemble **36** and glue to the lower tail covers. In addition, glue it to the body.



**11** Assembly of the chest: Part 1

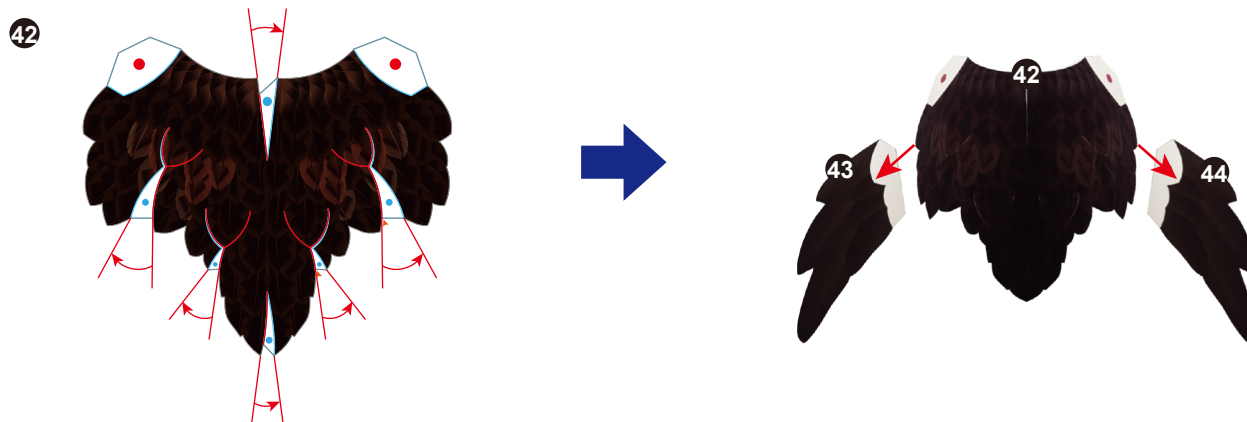
Assemble 41 and glue it to the upper bill. In addition, glue 39 and 40 to it together.



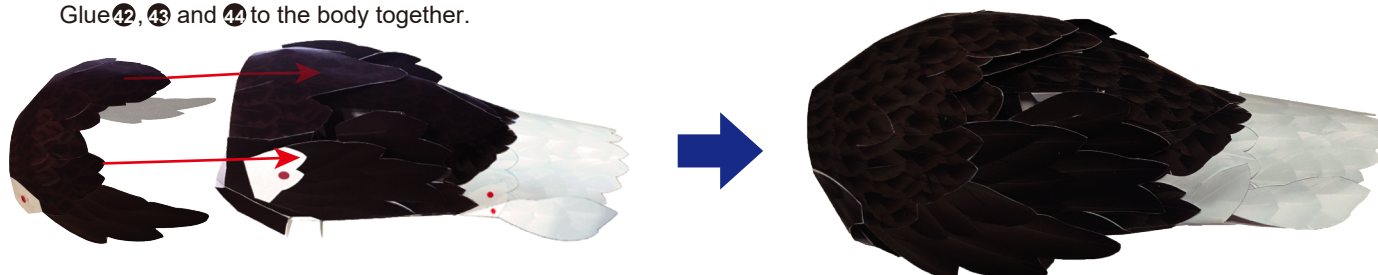
Glue 39, 40 and 41 to the body and then glue 37 and 38 to it.



Assemble 42, In addition, glue 43 and 44 to it.

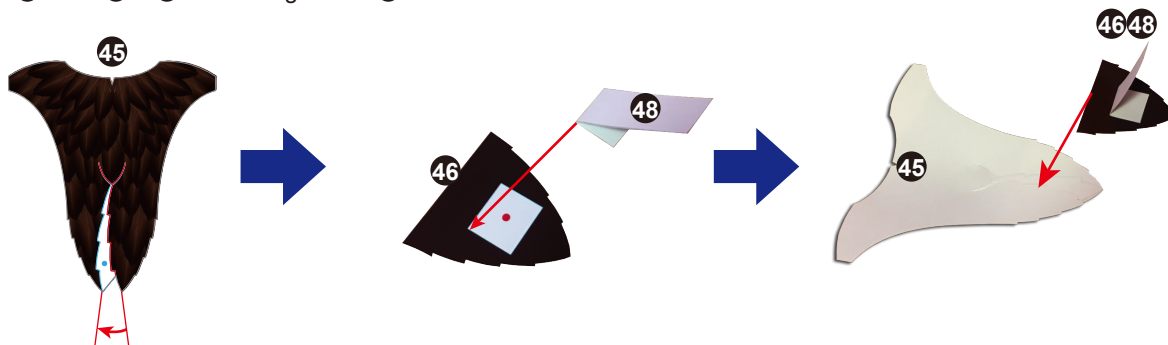


Glue 42, 43 and 44 to the body together.



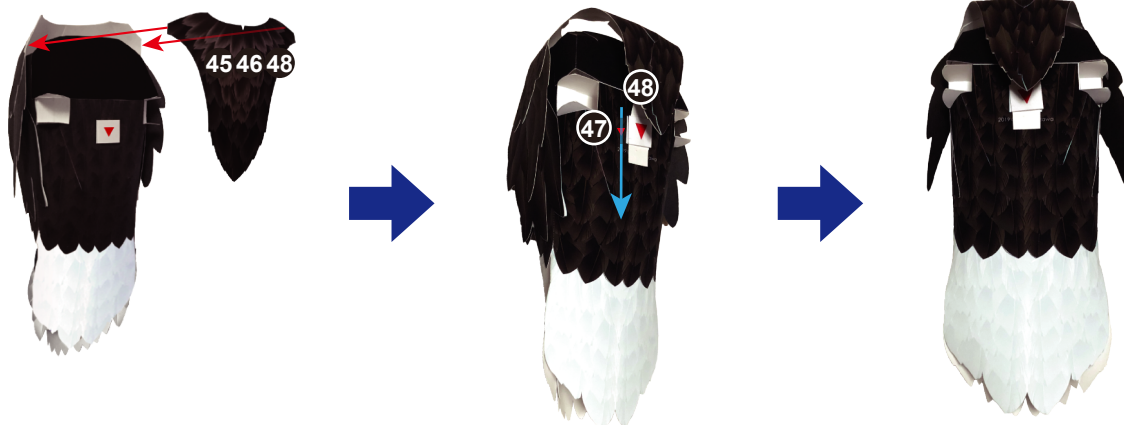
**12** Completion of the body

Assemble 45. Glue 48 to 46 and then glue it to 45.



Glue 45, 46 and 48 to the body.

Insert 48 in the hold of 47.



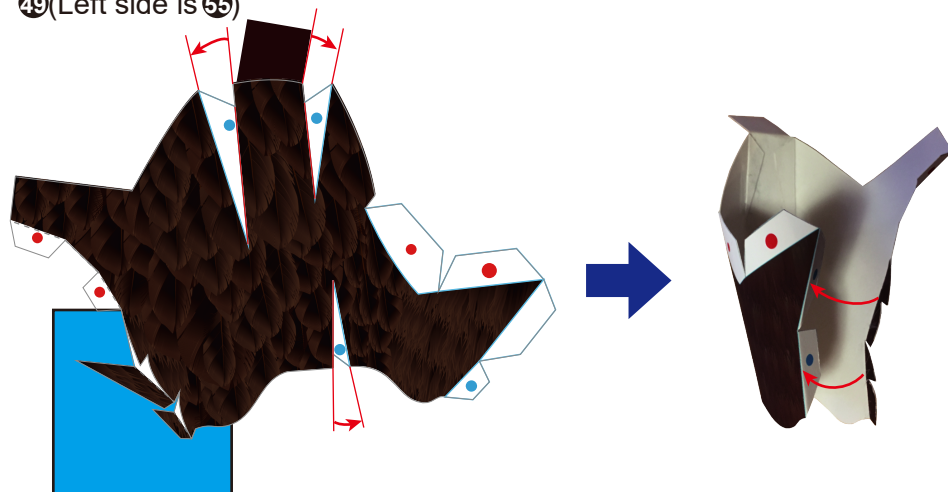
**13** Assembly of the legs: Part 1

Assemble 49 (Left side is 55)

Assemble 51 (Left side is 57)

49 (Left side is 55)

51 (Left side is 57)



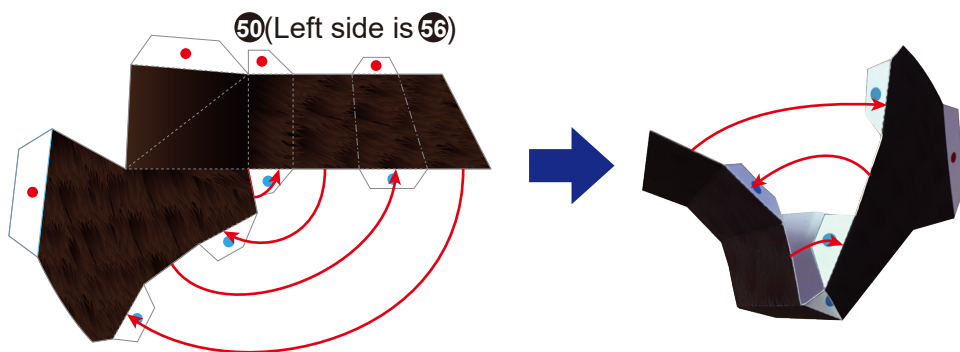
1. Fold inward along the red line and glue.

2. Cut off the white part.

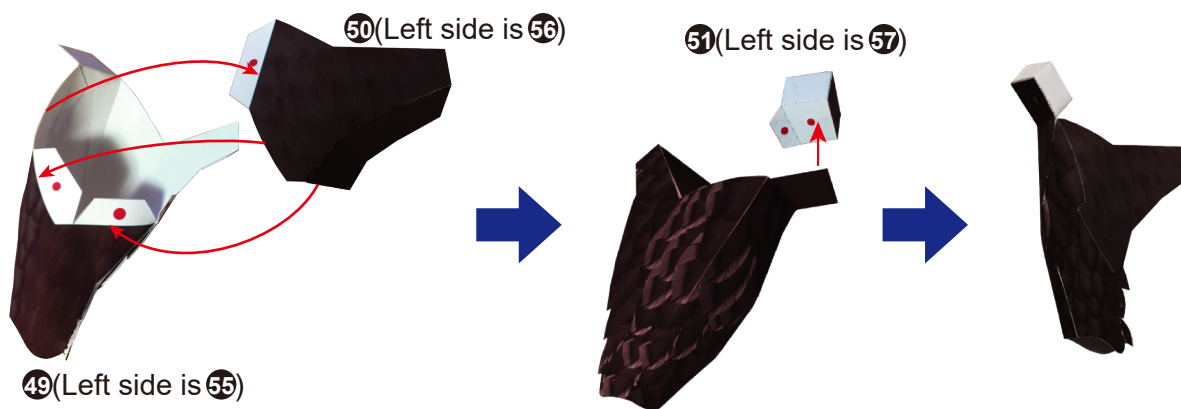


**14** Assembly of the legs: Part 2

Assemble **50** (Left side is **56**)

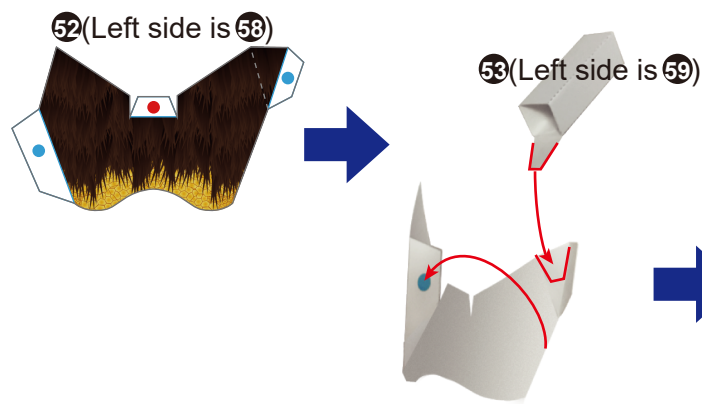


Glue **49** (Left side is **55**), **50** (Left side is **57**) and **51** (Left side is **58**) together

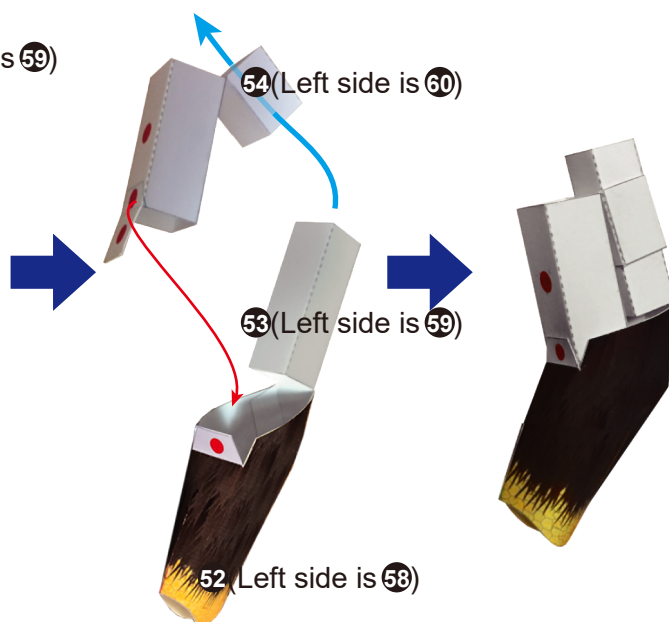


**15** Assembly of the legs: Part 3

Assemble **52** (Left side is **58**) and glue **53** (Left side is **59**) to it



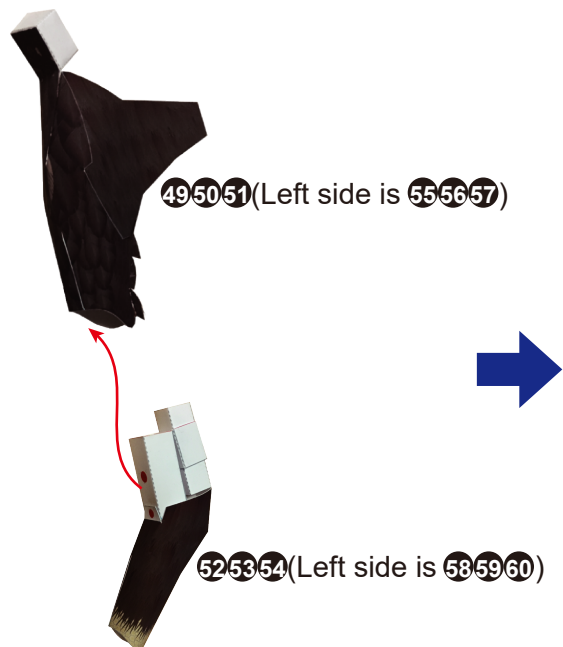
Assemble **54** (Left side is **60**) and insert **53** (Left side is **59**) inside it, and then glue to **52** (Left side is **58**).



Assembly of the chest: Part 1

**16** Completion of the legs

Glue 49, 50, 51 (Left side is 55, 56 and 57) to 52, 53 and 54 (Left side is 58, 59 and 60) together.

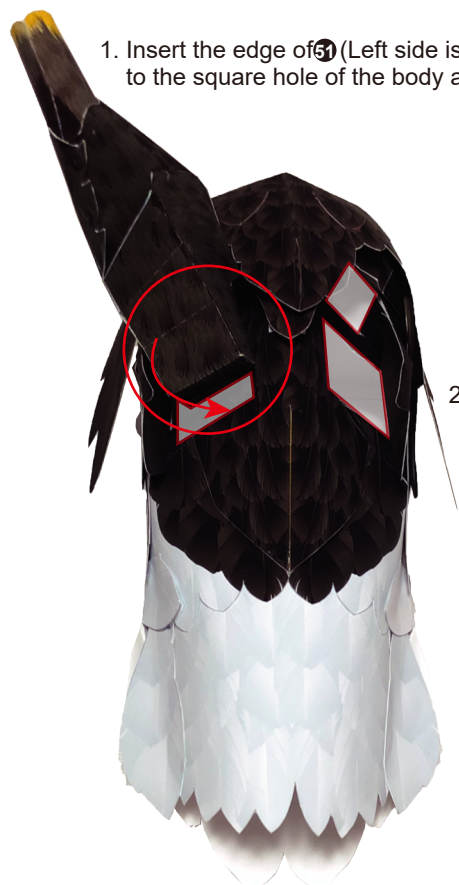


Completion of the legs



**17** Attachment of the legs to the body

1. Insert the edge of 51 (Left side is 57) to the square hole of the body as shown.



2. Insert the lower part of 50 (56) to the body as shown.

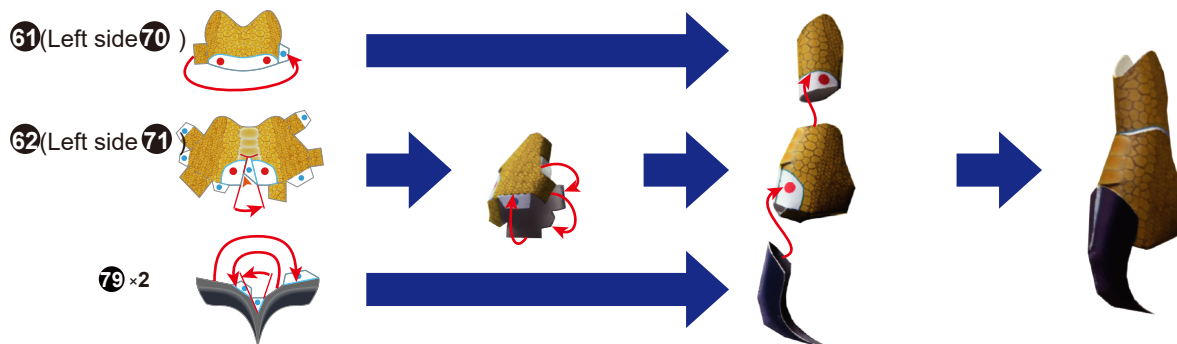
The completed legs



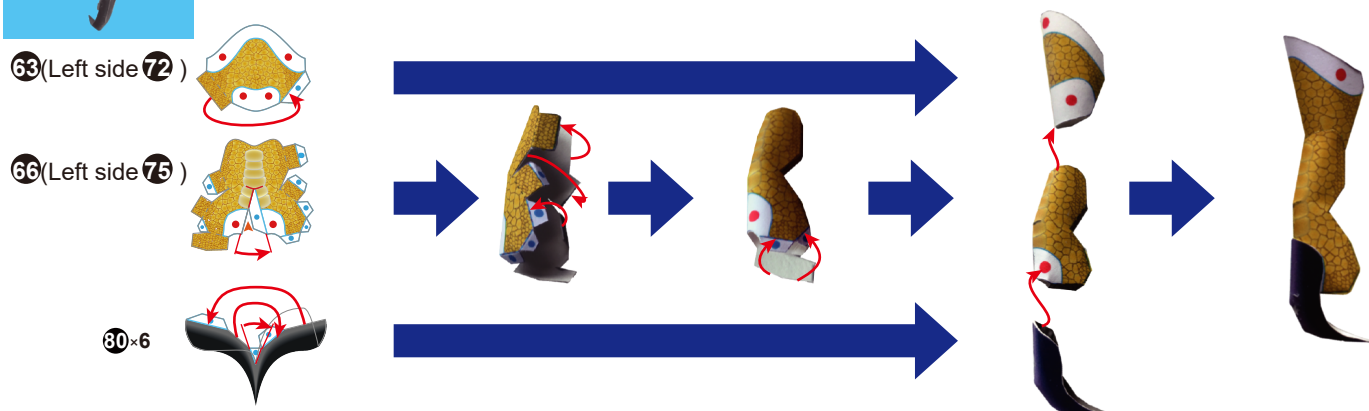
**18** Assembly of the feet: Part 1



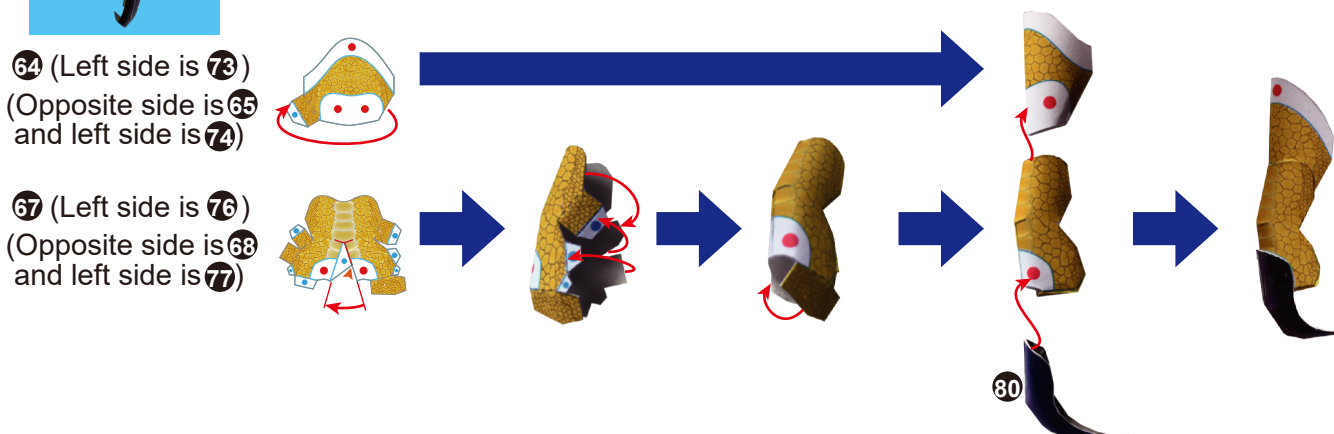
Assemble **61** (Left side is **70**), **62** (Left side is **71**) and **79** and then glue them together. This part is a first toe.



Assemble **63** (Left side is **72**), **66** (Left side is **75**) and **80** and then glue them together. This part is a middle toe.



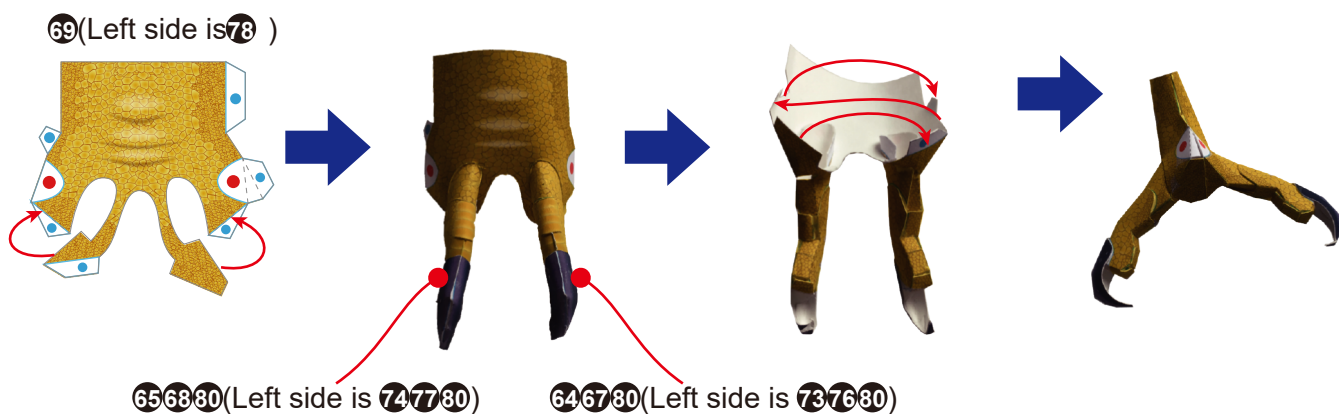
Assemble **64** (Left side is **73**), **67** (Left side is **76**) and **80** and then glue them together. These parts are the right and left toes.  
Assemble **65** (Left side is **74**), **68** (Left side is **77**) and **80** symmetrically in the same way.



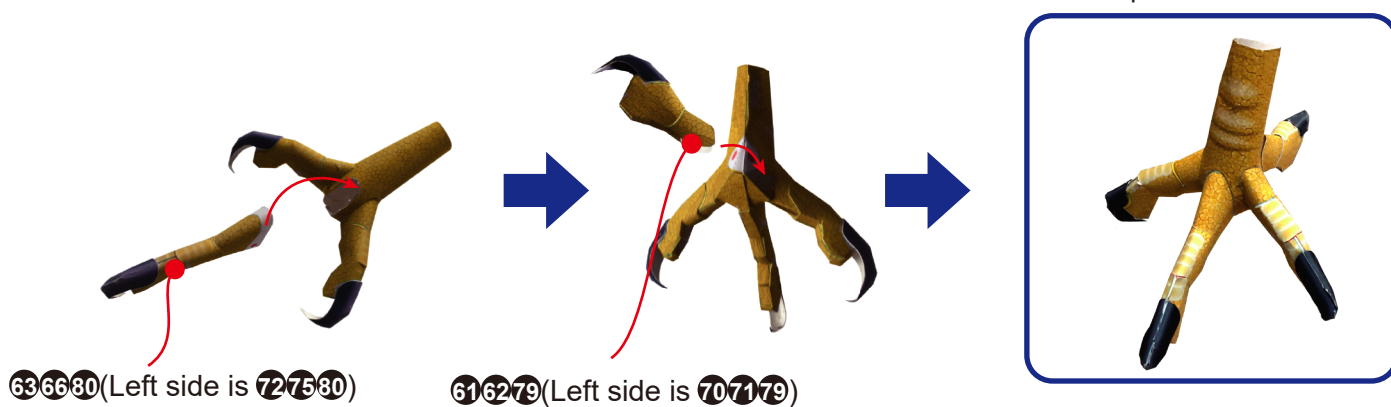


**19** Assembly of the feet: Part 2

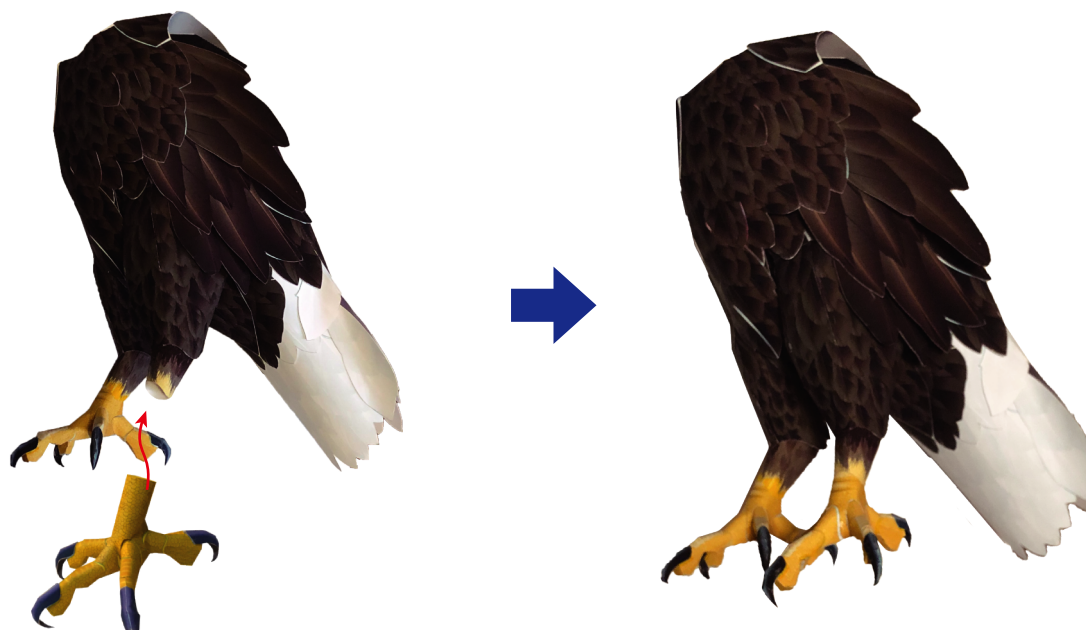
Glue **64**(Left side is **65**), **76**(Left side is **77**) and **80**(Left side is **80**) to **69**(Left side is **78**).



The completed feet



Attach the feet to the body.



**20** Assembly of the tail feathers

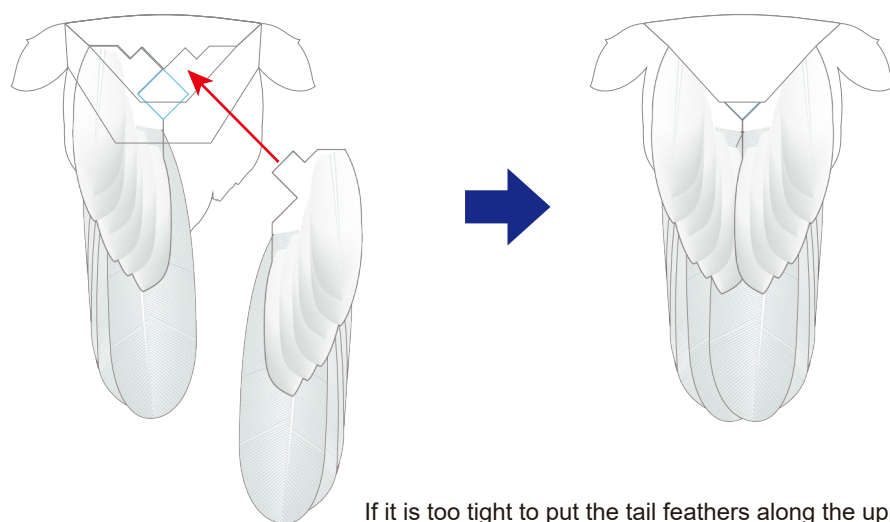
Glue the parts No. 92 through 95 (Right side is 97 through 100) together and glue 102 (Right side is 103) to them.



The completed tail feathers



Put each tail feather along the either side of the joint of the upper tail covers assembled in Step 9.

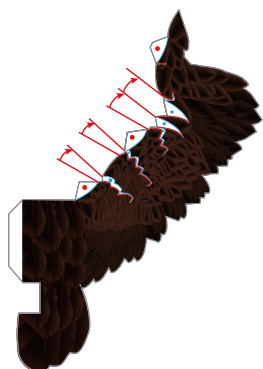


If it is too tight to put the tail feathers along the upper tail covers, please adjust the joint of the tail feathers by cutting the joint a little bit.

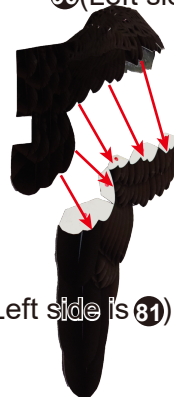
# 21 Assembly of the wings

Assemble 90 (Left side is 85), 87 (Left side is 82) and 89 (Left side is 84) and then glue the back side of 88 (Left side is 81), 89 (Left side is 84).

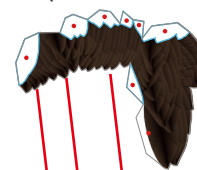
90 (Left side is 85)



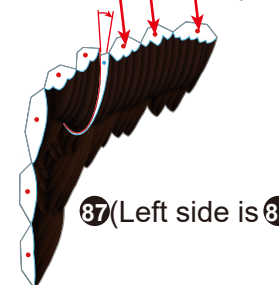
90 (Left side is 85)



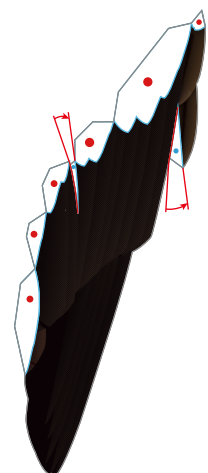
86 (Left side is 83)



87 (Left side is 82)



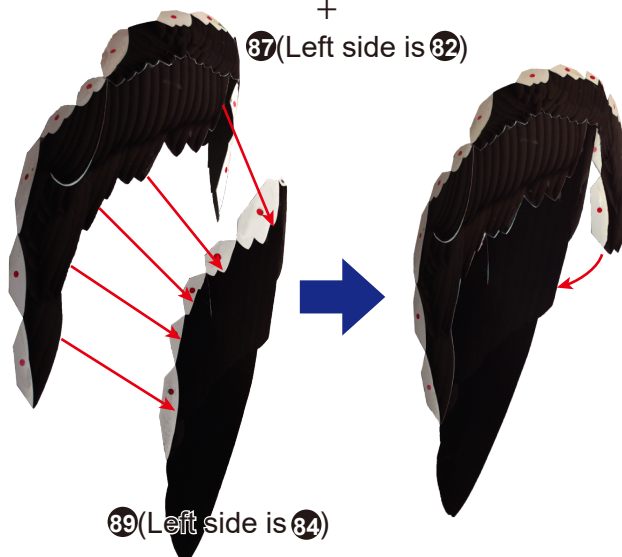
89 (Left side is 84)



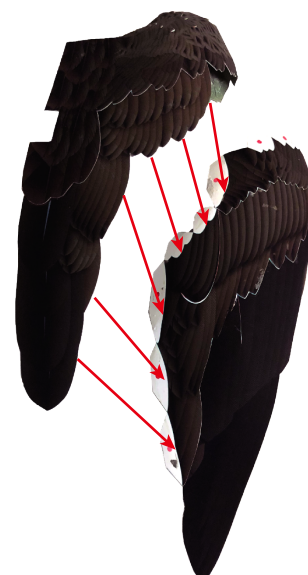
86 (Left side is 83)

+

87 (Left side is 82)



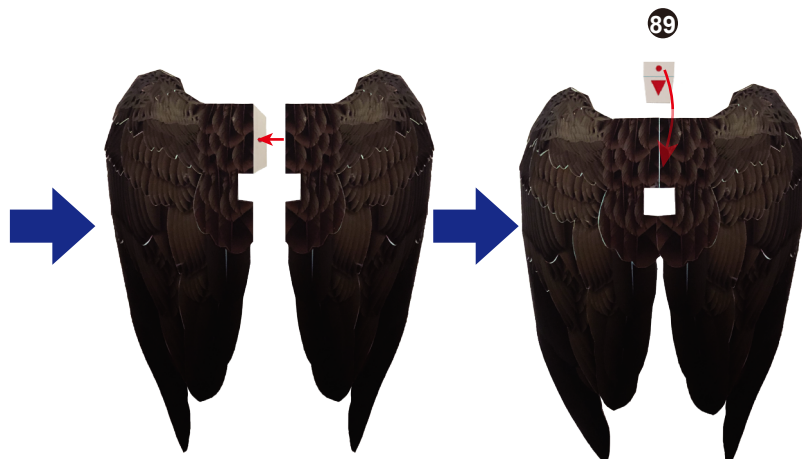
89 (Left side is 84)



The back



Glue 89 to the back of wing as shown.



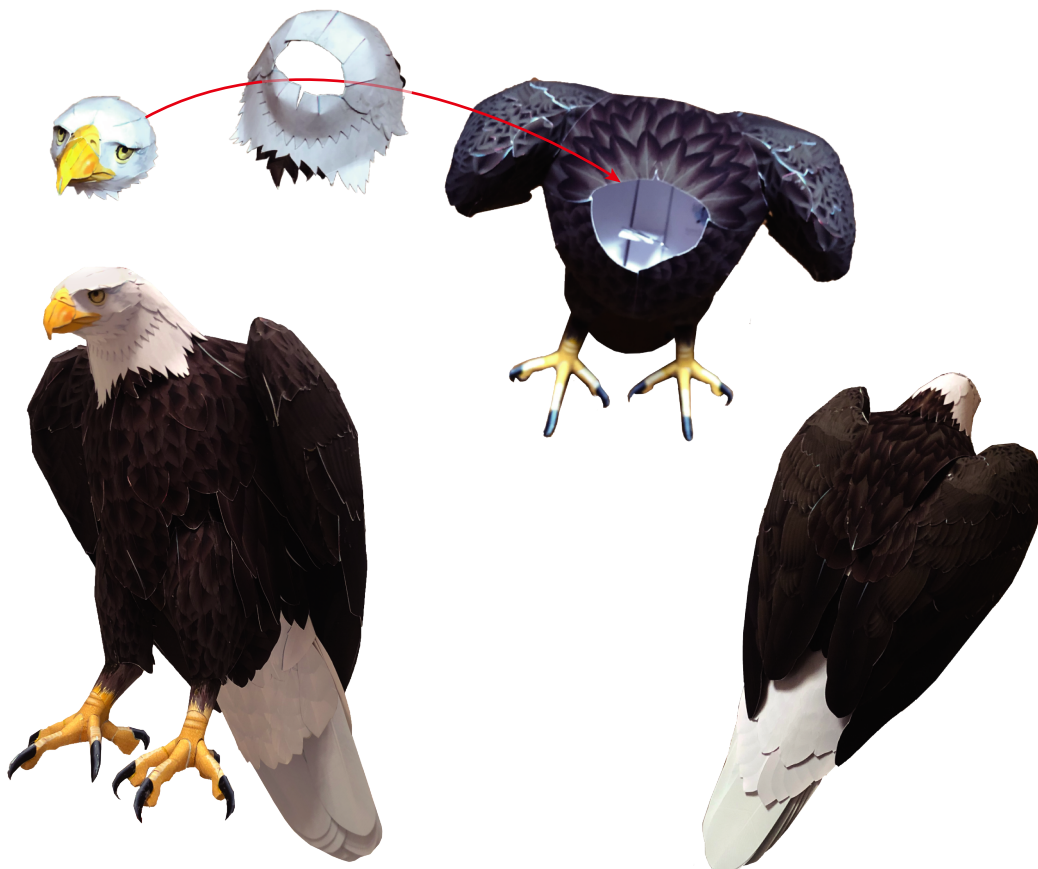


## 22 Attachment of the wings and the head to complete the eagle

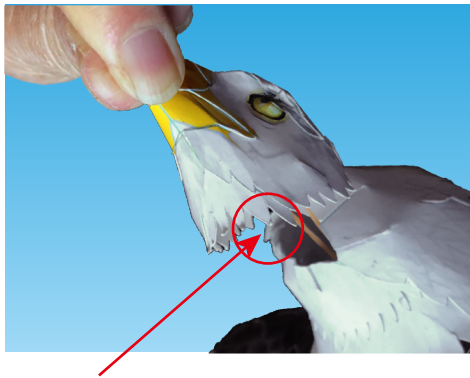
Insert **38** shown in Step **21** in **47** shown in Step **10** and insert **48** shown in Step **12** in it to fix the wings.



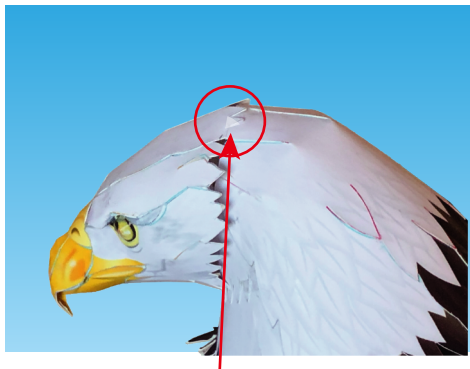
Place the rubber band of the head to the neck and fix the head by connecting the clip of the head to the clip of the internal frame of the body.



The completed golden eagle

**23** With the mouth opened**24** With the head forward

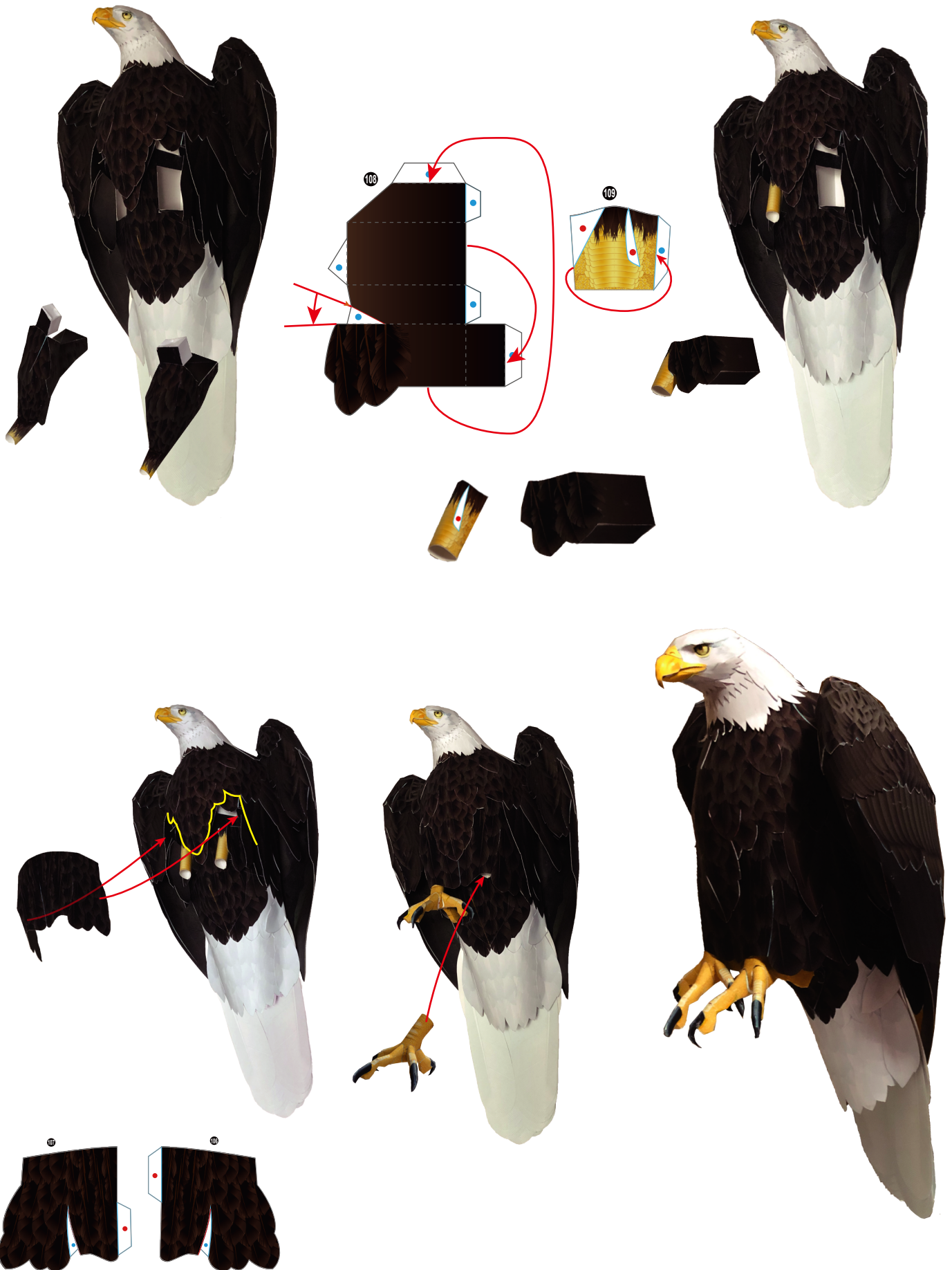
Hook the rubber band over the middle slit of the neck and adjust the degree of stretch of the rubber band.



Tuck the part of the feather of the head in the back side of the neck.



**25** With sitting





**23** Assembly and completion of the display stand

